



ROSEHILL GARDENS

# BETTING RING

*Large versatile undercover space, ideal for exhibitions, concerts or family fun days.*

As its name suggests this space was once a hive of activity on racedays where backing a winner was the objective. Today, the Betting Ring is a flexible undercover function space located at the rear of the Grandstand. It is ideal for cultural festivals, concerts, product launches, trade shows, exhibitions and corporate family days where up to 3000 people can comfortably enjoy what is on offer.



## VENUE FEATURES

- Over 1300m<sup>2</sup> of undercover space with ground level access
- Close proximity to the lawn area
- Adjoins the indoor event space in the grandstand
- Free high density WiFi
- 4m x 2.5m multi-panel LED Screen
- Public address system
- Three phase and standard power
- Bar and café outlets
- Amenities
- Free onsite parking
- Onsite security

## SUITABLE FOR

Outdoor exhibitions, consumer shows, corporate events and family days.

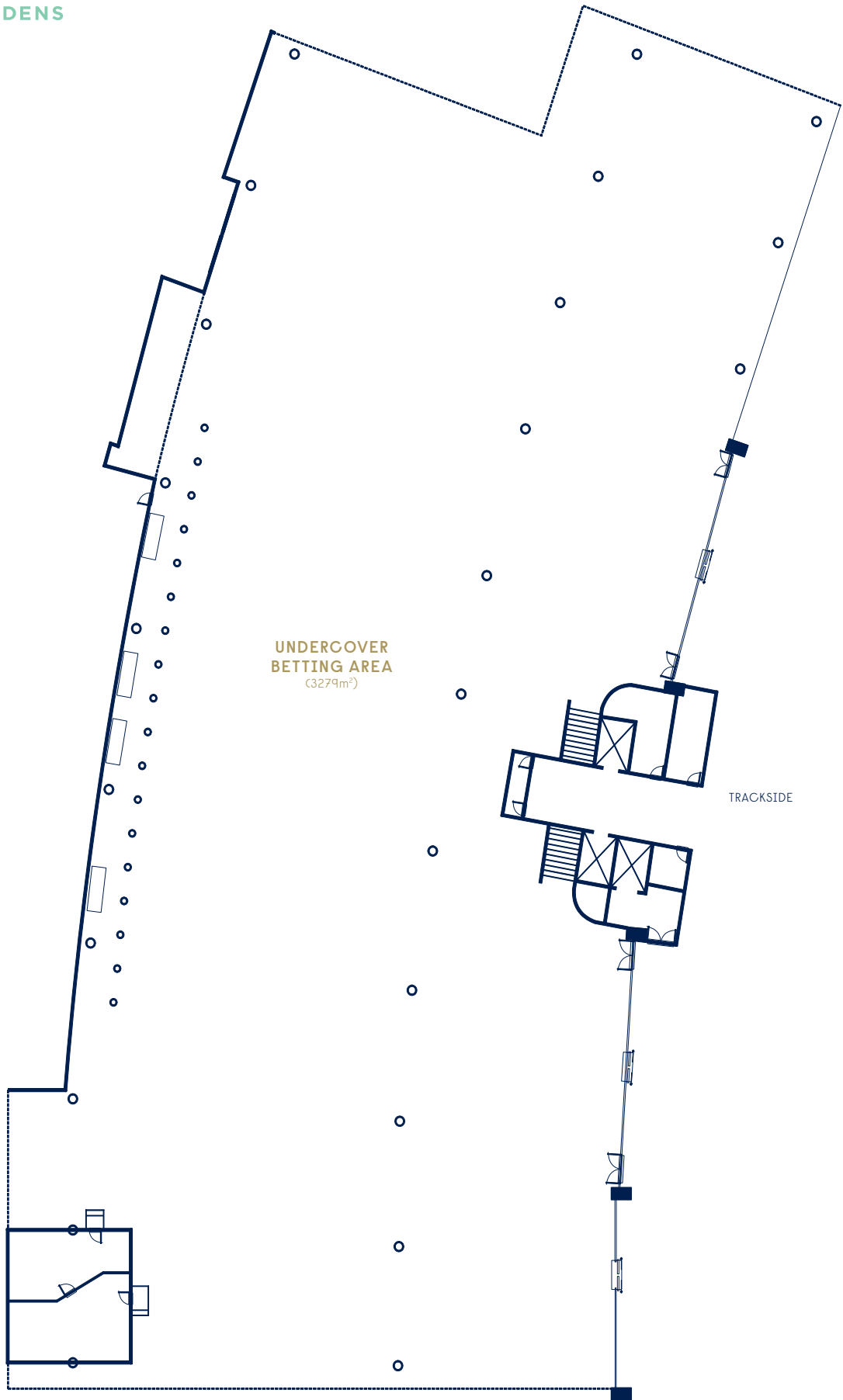
- Gross Area:** 1379m<sup>2</sup>
- Dimensions:** 84.3m x 38.9m
- Floor Loading:** 10kPa per m<sup>2</sup>
- Roof Loading:** Variable load restrictions

To find out more please contact our Meetings & Events Team  
P | 1300 729 668  
E | [meetingsandevents@australianurfclub.com.au](mailto:meetingsandevents@australianurfclub.com.au)



ROSEHILL GARDENS

BETTING RING



VENUE CAPACITY

3000 COCKTAIL, OUTDOOR EVENT







ROSEHILL GARDENS

# EXHIBITION HALL

*Pillarless and light-filled venue opening out onto ample green spaces overlooking the vibrant Rosehill Gardens.*

The Exhibition Hall has been home to many iconic events over the years. With high ceilings, a wealth of space, state-of-the-art connectivity and complementary amenities, it is ideal for lifestyle exhibitions, tradeshows, product launches, corporate training and music festivals. A space unlike any other in Sydney's West.



## VENUE FEATURES

- 4000m<sup>2</sup> of flexible carpeted indoor space
- Floor-to-ceiling glass allowing natural light in with spectacular racecourse views
- Adjoining outdoor terrace with close proximity to the lawn area
- Fully self contained
- Free high density WiFi
- Public address system
- Three phase and standard power
- Floor service pit grid approx 6m x 9m, with a total of 55pits
- Amenities
  - Bar and café outlets
  - Water and waste services
  - Phone and data services
  - Free onsite parking
  - Onsite security

## SUITABLE FOR

Trade exhibitions and consumer shows, special events, corporate family days, cocktail parties, indoor concerts/festivals, corporate training and exams.

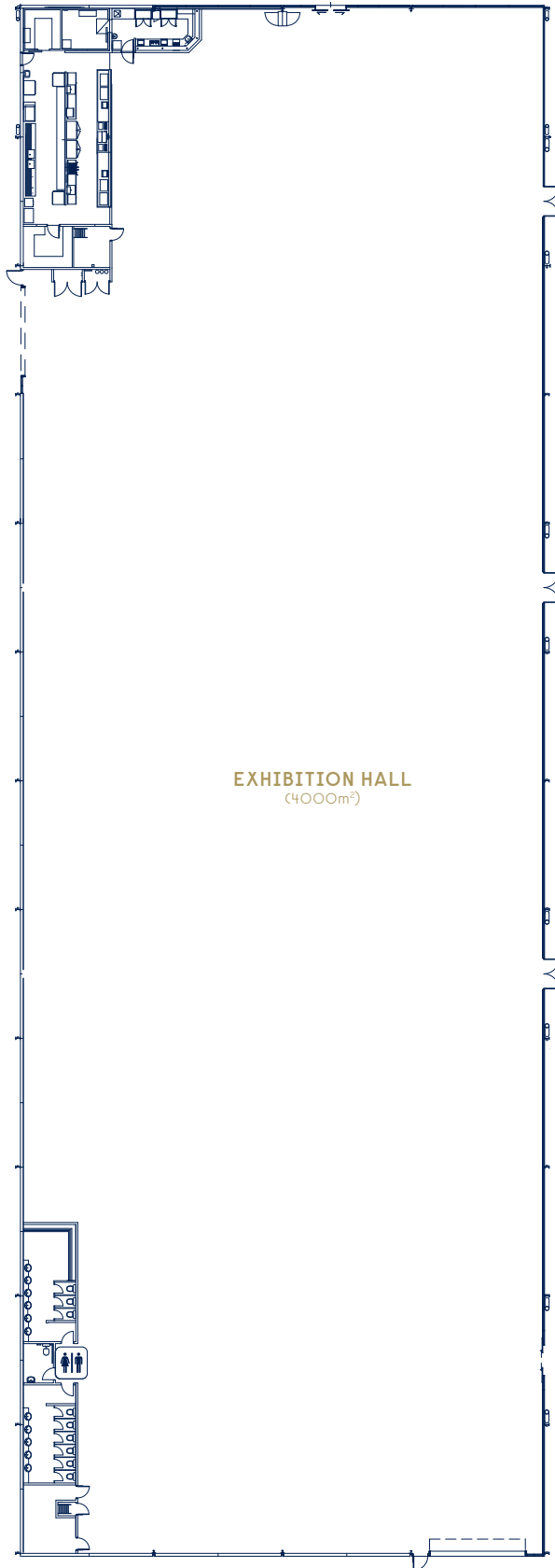
- Gross Area:** 4000m<sup>2</sup>
- Height:** 6-10m
- Floor Loading:** 10kPa per m<sup>2</sup>
- Roof Loading:** Variable load restrictions

To find out more please contact our Meetings & Events Team  
P | 1300 729 668  
E | [meetingsandevents@australianurfclub.com.au](mailto:meetingsandevents@australianurfclub.com.au)



ROSEHILL GARDENS

EXHIBITION HALL



VENUE CAPACITY

2000 THEATRE

1000 CLASSROOM

2000 COCKTAIL

2000\* BANQUET

1300 EXAM

183 EXHIBITION BOOTHS

\* Stage only







ROSEHILL GARDENS

# GRAND PAVILION LEVEL 1

*First-class space overlooking the lush green of the racetrack, flexible for any event style.*

The Grand Pavilion is a space to behold, expansive in its size offering up a blank canvas to transform your event into an occasion. Located at the northern end of the racecourse with an abundance of floor space and floor-to-ceiling glass which ensures a wealth of natural light, it is ideal for creating those motivating moments at conferences. Your own private large alfresco area adds extra space for indoor / outdoor exhibitions, corporate family days, product launches or large cocktail celebrations.



## VENUE FEATURES

- 3300m<sup>2</sup> of light-filled air conditioned carpeted space
- Floor-to-ceiling glass overlooking the vibrant racetrack
- 1000m<sup>2</sup> privately fenced lawn adjoined to the indoor space
- Wall mounted LCD screens
- Free high density WiFi
- Public address system
- Three phase and standard power
- Phone and data services
- Water and waste services
- Bar and café outlets
- Amenities
- Free onsite parking
- Onsite security

## SUITABLE FOR

Trade exhibitions and consumer shows, cocktail parties, family fun days, markets and corporate training.

**Gross Area:** 3300m<sup>2</sup>

**Height:** 4.3m

**Loading Access:** Direct loading access for cars and trucks

**Roof Loading:** Variable load restrictions, details on application

**Floor Loading:** 10kPa per m<sup>2</sup>

To find out more please contact our

Meetings & Events Team

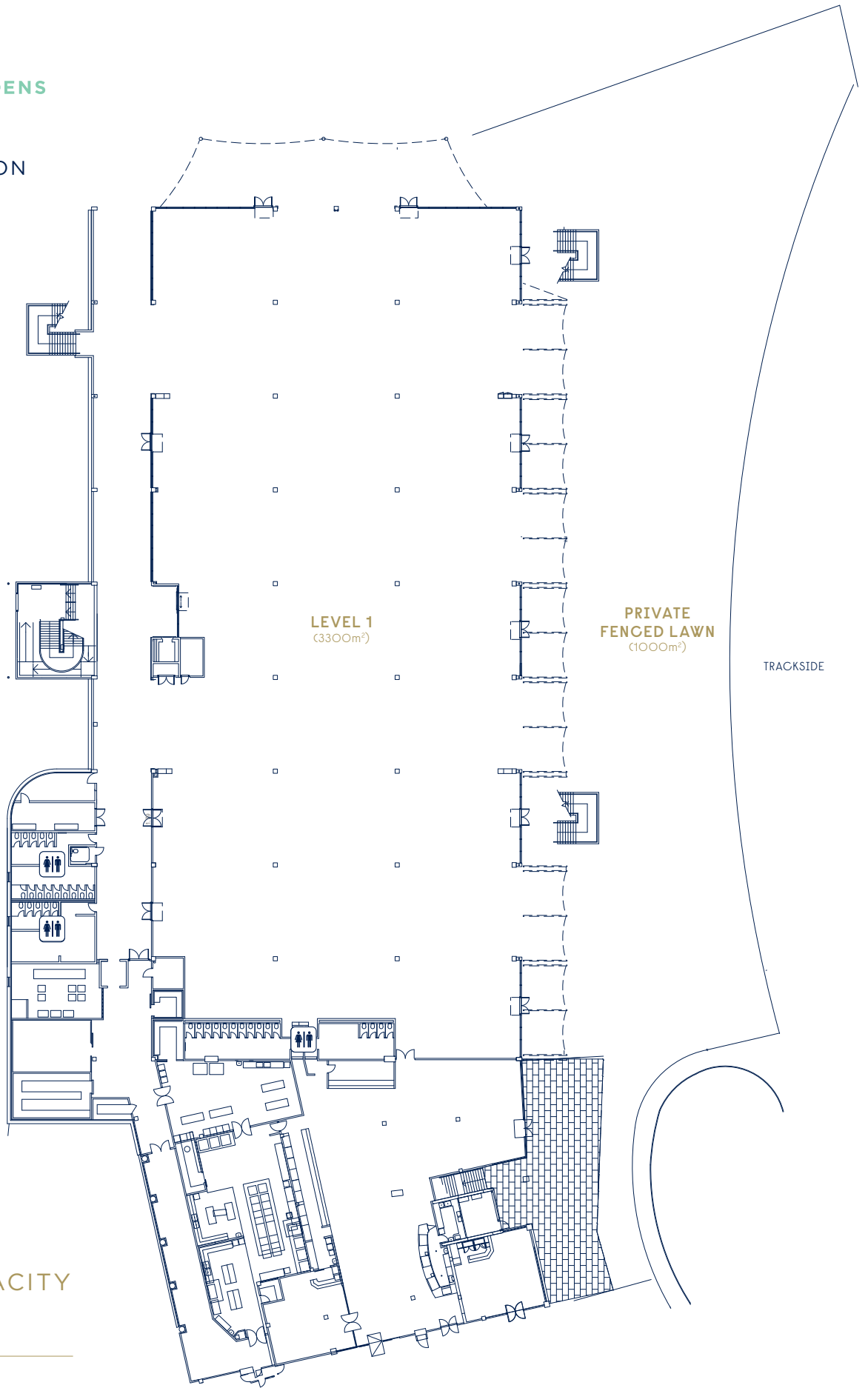
P | 1300 729 668

E | [meetingsandevents@australianurfclub.com.au](mailto:meetingsandevents@australianurfclub.com.au)



ROSEHILL GARDENS

LEVEL 1  
GRAND PAVILION



VENUE CAPACITY

2800 COCKTAIL

1200 BANQUET

960 EXAM

164 EXHIBITION BOOTHS







ROSEHILL GARDENS

# GRAND PAVILION LEVEL 2

*State-of-the-art facility opening to a wrap around balcony with views of the city skyline.*

Impressive in size and elegant in nature, Level 2 of the Grand Pavilion boasts a rare feature in event spaces of this size, unobstructed views with the entire area pillar-free. A grand sense of arrival, contemporary décor and high ceilings with floor-to-ceiling windows full of natural light are just some of the unique features that makes this the perfect location for large gala dinners, product launches, conferences, exhibitions and large weddings. The adjoining wrap around balcony opens out to an undercover seating deck and an open terrace with views of the racetrack and Sydney CBD skyline which is perfect for pre-dinner cocktails, conference break-outs or catering. A truly unique space not seen elsewhere in Sydney's West.



## VENUE FEATURES

- 3000m<sup>2</sup> of pillar-free light-filled carpeted indoor space
- Floor-to-ceiling glass with spectacular racecourse views
- Adjoining Grandview Terrace and seating deck
- Acoustically sound proof electronic operable walls enable the space to be divided up into six smaller areas
- Free high density WiFi
- Wall mounted LCD screens 4 x flown data projectors and motorised screens (4.8m x 2.7)
- In house audio system
- Public address system
- Electronic directional foyer signage
- Dimmable lighting
- Motorised blinds
- Air conditioned
- Passenger lift
- Wheelchair access
- Amenities
- Free onsite parking
- Onsite security

## SUITABLE FOR

Conferences, seminars, conventions, special events, gala dinners, corporate lunches, cocktail parties, product launches and weddings.

**Gross Area:** 3000m<sup>2</sup>

**Height:** 4.3m

**Loading Access:** Ramp total weight 10 Tonnes  
Roller door access 6.5m wide

**Roof Loading:** Variable load restrictions, details on application

**Floor Loading:** 10kPa per m<sup>2</sup>

To find out more please contact our Meetings & Events Team

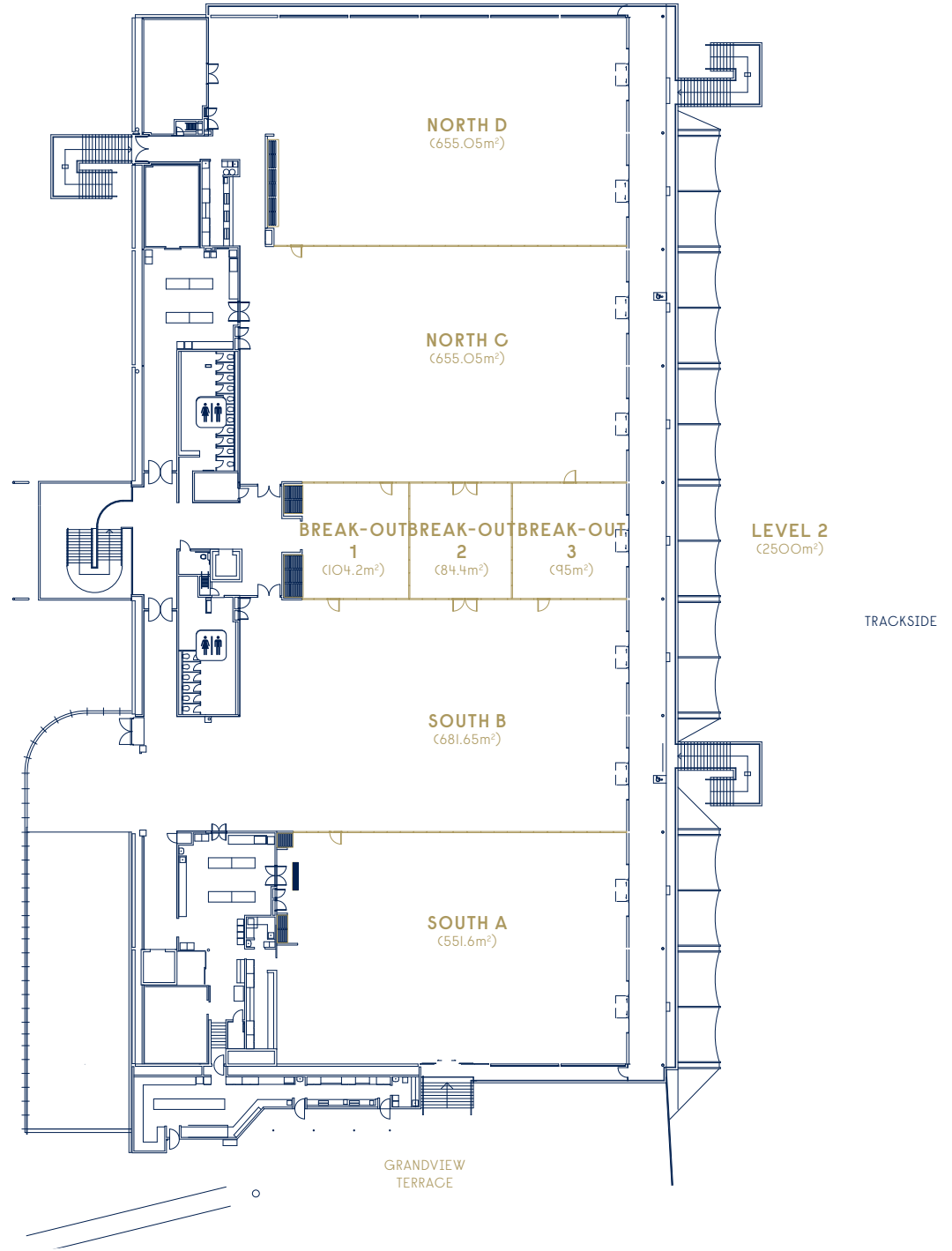
P | 1300 729 668

E | [meetingsandevents@australianurfclub.com.au](mailto:meetingsandevents@australianurfclub.com.au)



ROSEHILL GARDENS

LEVEL 2  
GRAND PAVILION



VENUE CAPACITY

| Grand Pavilion    | Level 2 | North | South | South A | South B | Break-out 1 | Break-out 2 | Break-out 3 |
|-------------------|---------|-------|-------|---------|---------|-------------|-------------|-------------|
| THEATRE           | 2200    | 1000  | 900   | 400     | 450     | 95          | 95          | 105         |
| CLASSROOM         | 1835    | 795   | 740   | 345     | 420     | 45          | 45          | 45          |
| COCKTAIL          | 2800    | 1300  | 1100  | 500     | 600     | 100         | 80          | 90          |
| BANQUET           | 1700    | 850   | 850   | 340     | 380     | 60          | 50          | 50          |
| CABARET           |         | 595   | 595   | 240     | 240     | 40          | 35          | 35          |
| EXAMS             | 990     |       |       |         |         |             |             |             |
| EXHIBITION BOOTHS | 164     | 72    | 67    | 34      | 34      |             |             |             |







ROSEHILL GARDENS

# J. R. FLEMING GRANDSTAND

*A multi-purpose space spanning three levels with seamless indoor and outdoor flow.*

Vibrant in style and imposing in nature the newly refurbished J.R. Fleming Grandstand is one of our most pliable spaces, adaptable to any vision to create experiences like nowhere else. Positioned alongside the trackside lawn, it is perfectly suited to outdoor functions requiring adjoining indoor space such as conferences and exhibitions. It can be used in its entirety or broken up into smaller areas for more intimate functions. All levels are connected via internal elevators and escalators for an effortless flow of guests between multiple levels. The perfect takeover space for large events.



## VENUE FEATURES

- Three levels of versatile event spaces
- Natural light and carpeted floor
- Seamlessly adjoins trackside lawn space with racecourse views
- Adjacent to Exhibition Hall for added space
- Free high density WiFi
- Multi-panel LED screen
- Wall mounted LCD screens
- Public address sound system
- Roller door access
- Standard and three phase power
- Phone and data services
- Existing bars and café outlets
- Amenities
- Air conditioned
- Free onsite parking
- Onsite security

## SUITABLE FOR

Conferences, seminars, special events, cocktail parties, product and car launches, corporate family days, exams, trade exhibitions and consumer shows.

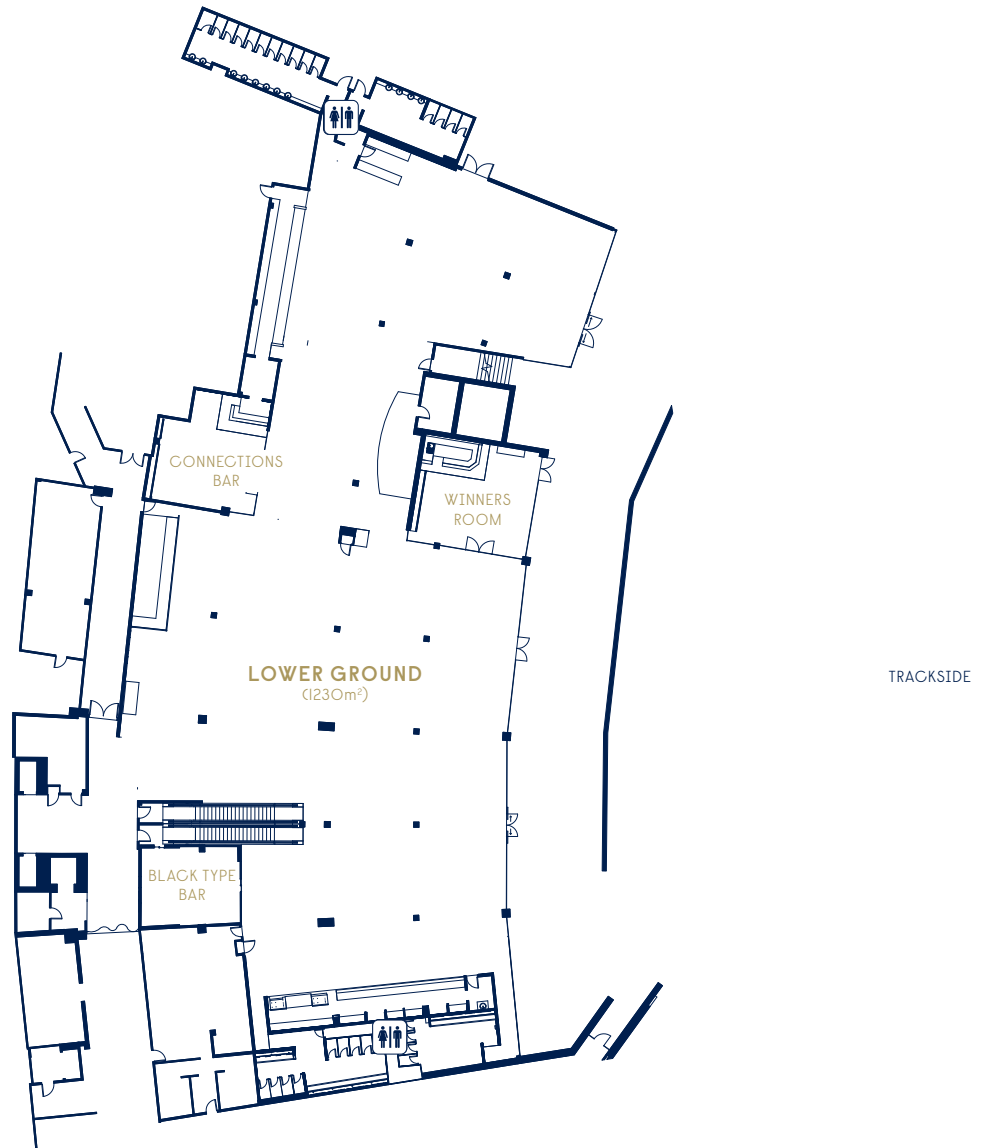
- Lower Ground:** 1230m<sup>2</sup>
- Ground:** 4189m<sup>2</sup>
- Level 1:** 1702m<sup>2</sup>
- Level 2:** 1490m<sup>2</sup>
- Level 3:** 609m<sup>2</sup>

To find out more please contact our Meetings & Events Team  
P | 1300 729 668  
E | [meetingsandevents@australianurfclub.com.au](mailto:meetingsandevents@australianurfclub.com.au)



## ROSEHILL GARDENS

### LOWER GROUND FLOOR J.R. FLEMING STAND



### VENUE CAPACITY

400 THEATRE

600 COCKTAIL

300 EXAMS

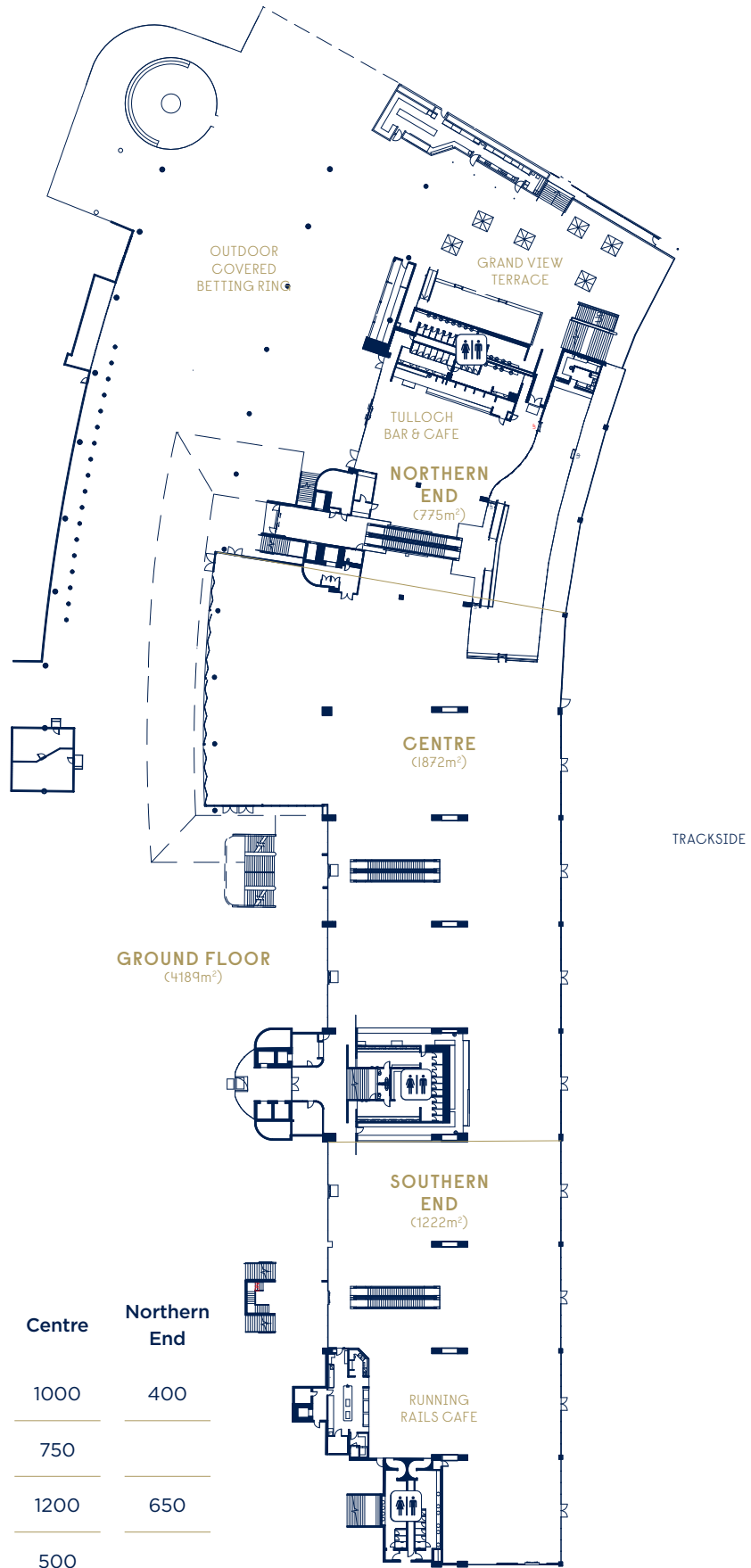
50 EXHIBITION BOOTHS

0m 3m 5m 10m



ROSEHILL GARDENS

GROUND FLOOR  
J.R. FLEMING STAND



VENUE CAPACITY

| Room              | Ground Floor | Southern End | Centre | Northern End |
|-------------------|--------------|--------------|--------|--------------|
| THEATRE           |              | 800          | 1000   | 400          |
| CLASSROOM         |              | 400          | 750    |              |
| COCKTAIL          | 2000         | 1000         | 1200   | 650          |
| BANQUET           |              | 500          | 500    |              |
| EXAMS             |              | 250          | 250    | 150          |
| EXHIBITION BOOTHS | 123          | 120          | 100    | 60           |

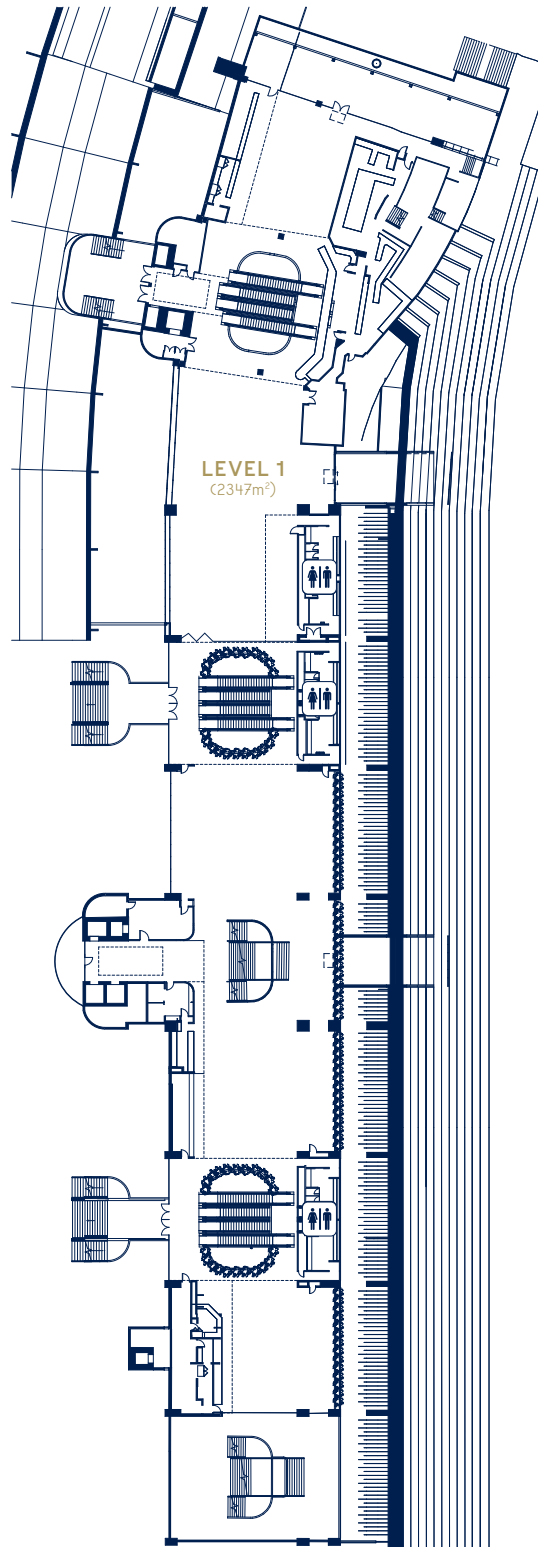
0m 6m 10m 20m





## ROSEHILL GARDENS

### LEVEL 1 J.R. FLEMING STAND



### VENUE CAPACITY

200 THEATRE

300 CLASSROOM

400 COCKTAIL

250 EXAMS

120 EXHIBITION BOOTHS

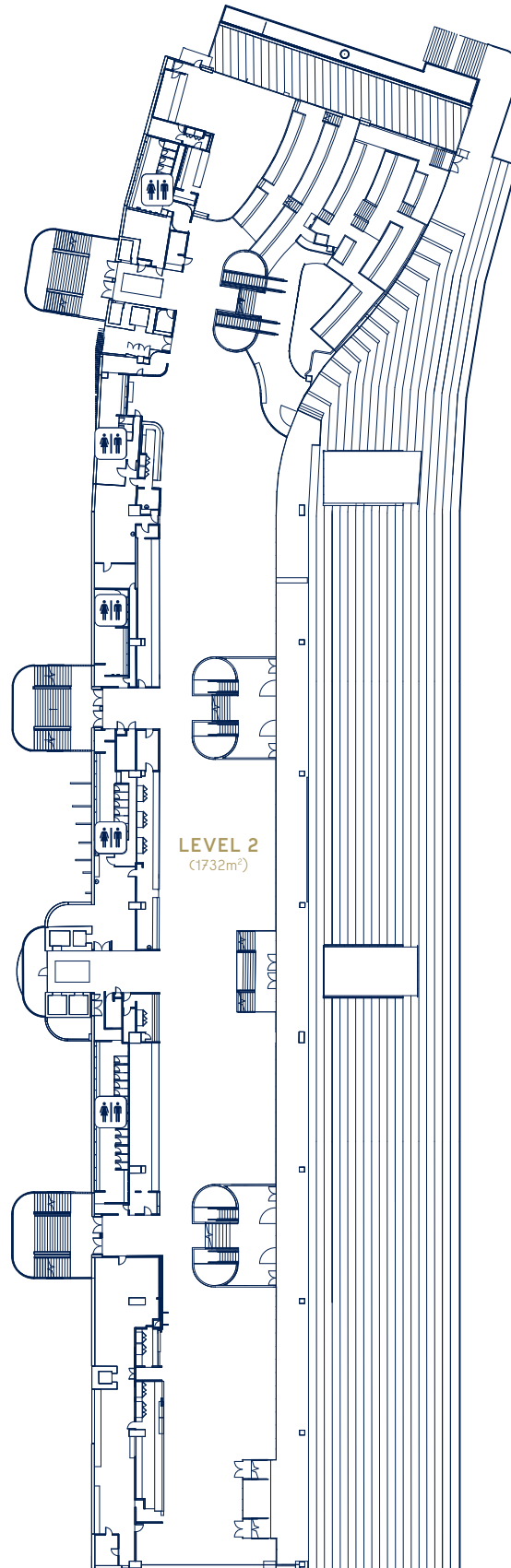
TRACKSIDE

0m 6m 10m 20m



## ROSEHILL GARDENS

### LEVEL 2 J.R. FLEMING STAND



### VENUE CAPACITY

250 THEATRE

200 CLASSROOM

350 COCKTAIL

330 BANQUET

150 EXAMS

23 EXHIBITION BOOTHS

TRACKSIDE

0m 6m 10m 20m

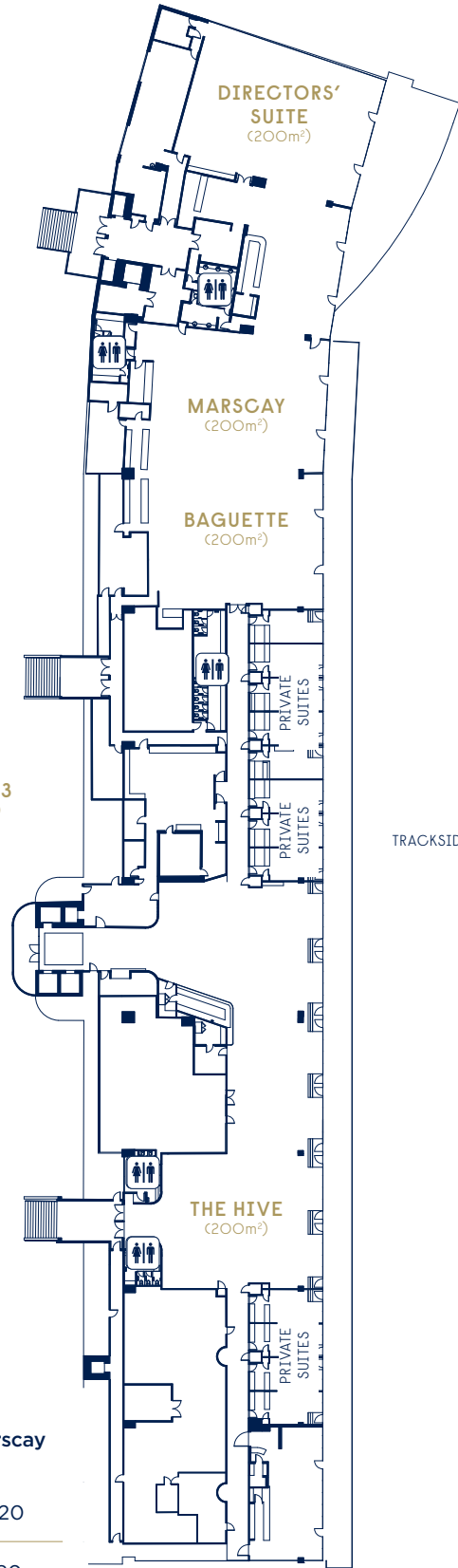




ROSEHILL GARDENS

LEVEL 3  
J.R. FLEMING STAND

LEVEL 3  
(609m<sup>2</sup>)



VENUE CAPACITY

| Room              | The Hive | Directors' Suite | Baguette | Marscay |
|-------------------|----------|------------------|----------|---------|
| THEATRE           | 120      | 180              | 220      | 220     |
| CLASSROOM         | 80       | 150              | 180      | 180     |
| COCKTAIL          | 250      | 250              | 280      | 280     |
| BANQUET           | 240*     | 180              | 150      | 150     |
| CABARET           | 200#     | 95               | 90       | 90      |
| EXAMS             | 80       |                  |          |         |
| EXHIBITION BOOTHS | 12       |                  |          |         |

\* with stage.  
# tables of eight only.







ROSEHILL GARDENS

# THE HIVE

*A contemporary and elegant open concept space with private lift access awaits.*

A hive of activity on racedays, this space transforms into a dazzling area for any event. With a botanical rooftop bar feel, The Hive offers guests spectacular views overlooking the vibrant racetrack from a natural light-filled room. Designed with our guests in mind, The Hive is a multi-purpose space flexible enough for intimate celebrations, Christmas parties, small scale conferences and stylish weddings.



## VENUE FEATURES

- 250m<sup>2</sup> of flexible indoor space
- Natural light and carpeted floor
- Floor-to-ceiling windows trackside with racecourse views
- Private lift access
- Free high density WiFi
- Wall mounted LCD screens
- Public address sound system
- Standard power access
- Existing bars and café outlets
- Amenities
- Air conditioned
- Free onsite parking
- Onsite security

## SUITABLE FOR

Cocktail parties, product launches, dinners, lunches, conferences and weddings.

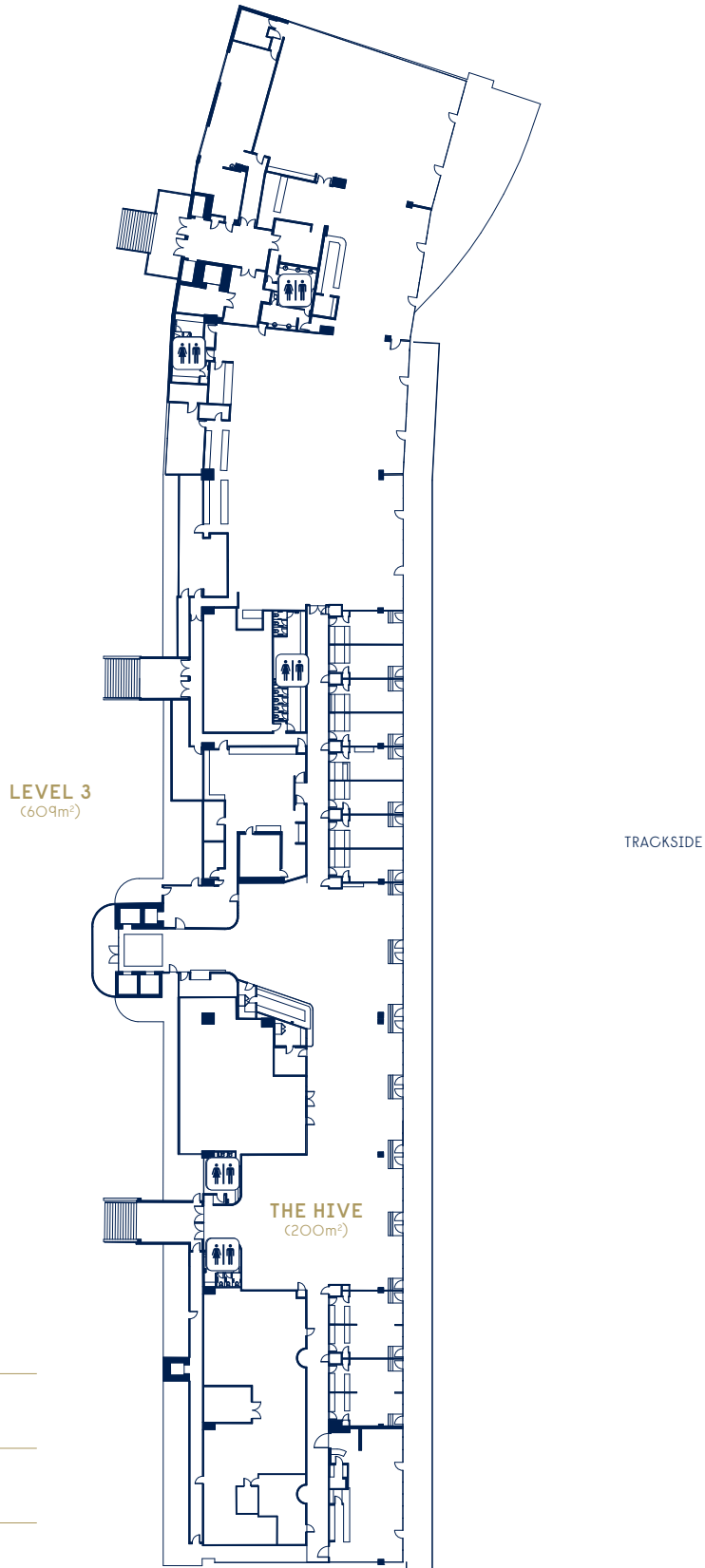
**Gross Area:** 250m<sup>2</sup>  
**Ceiling Height:** 2.5m  
**Loading Access:** Via Goods Lift

To find out more please contact our Meetings & Events Team  
P | 1300 729 668  
E | [meetingsandevents@australianurfclub.com.au](mailto:meetingsandevents@australianurfclub.com.au)



ROSEHILL GARDENS

THE HIVE  
LEVEL 3  
J.R. FLEMING STAND



VENUE CAPACITY

- 250 THEATRE

---

- 250 CLASSROOM

---

- 250 COCKTAIL

---

- 240 BANQUET (WITH STAGE)

---

- 200 CABARET (TABLES OF EIGHT ONLY)

---

- 80 EXAMS

---

- 12 EXHIBITION BOOTHS

---