

GRAND PAVILION LEVEL 1

First-class space overlooking the lush green of the racetrack, flexible for any event style.

The Grand Pavilion is a space to behold, expansive in its size offering up a blank canvas to transform your event into an occasion. Located at the northern end of the racecourse with an abundance of floor space and floor-to-ceiling glass which ensures a wealth of natural light, it is ideal for creating those motivating moments at conferences. Your own private large alfresco area adds extra space for indoor / outdoor exhibitions, corporate family days, product launches or large cocktail celebrations.



VENUE FEATURES

- 3300m² of light-filled air conditioned carpeted space
- Floor-to-ceiling glass overlooking the vibrant racetrack
- 1000m² privately fenced lawn adjoined to the indoor space
- Wall mounted LCD screens
- Free high density WiFi
- Public address system
- Three phase and standard power
- Phone and data services
- Water and waste services
- Bar and café outlets
- Amenities
- Free onsite parking
- Onsite security

SUITABLE FOR

Trade exhibitions and consumer shows, cocktail parties, family fun days, markets and corporate training.

Gross Area: 3300m²

Height: 4.3m

Loading Access: Direct loading access for cars and trucks

Roof Loading: Variable load restrictions, details on application

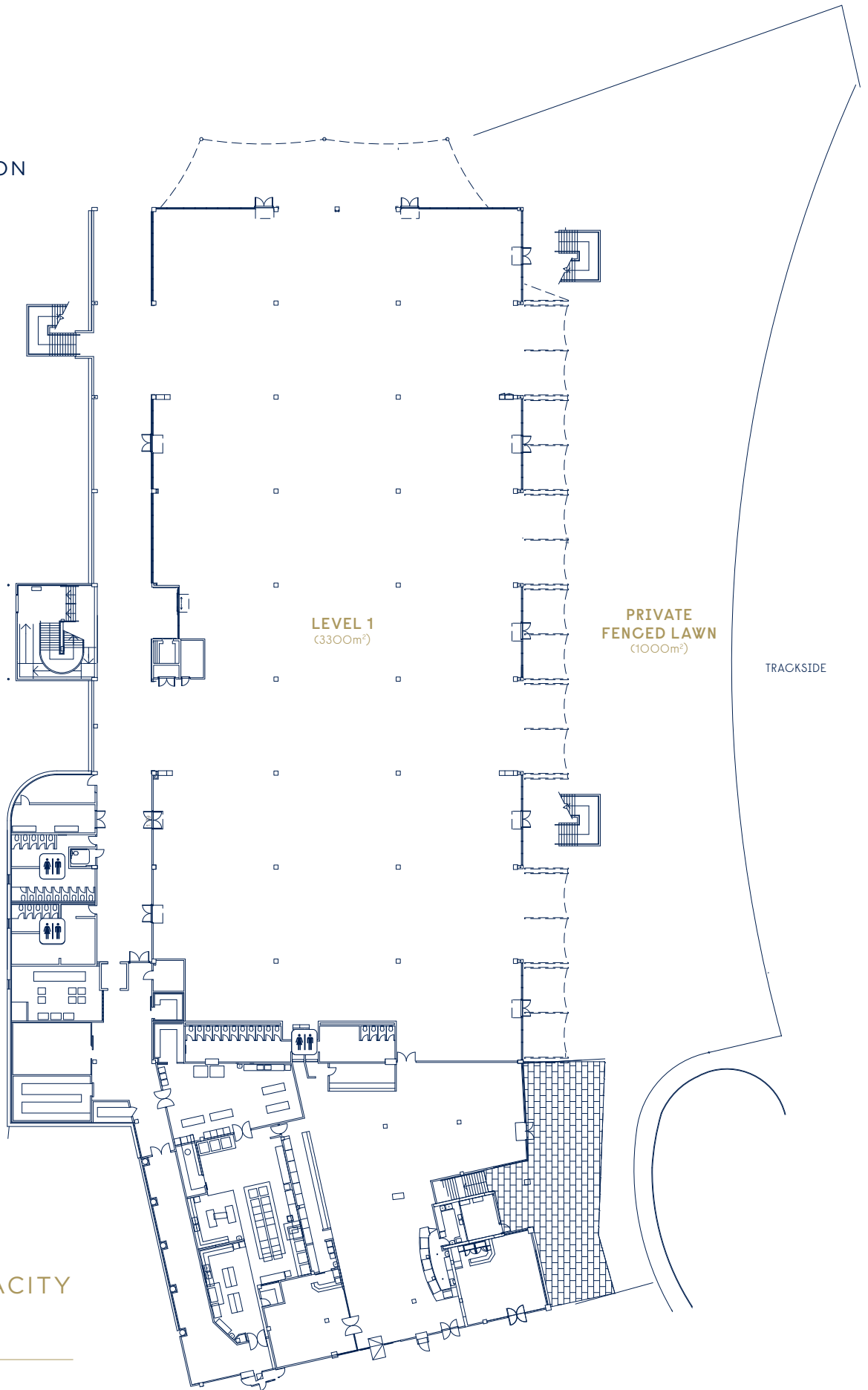
Floor Loading: 10kPa per m²

To find out more please contact our Meetings & Events Team

P | 1300 729 668

E | meetingsandevents@australianurfclub.com.au

LEVEL 1
GRAND PAVILION



VENUE CAPACITY

2800 COCKTAIL

1200 BANQUET

710 EXAM

164 EXHIBITION BOOTHS