



ROSEHILL GARDENS

# J. R. FLEMING GRANDSTAND

*A multi-purpose space spanning three levels with seamless indoor and outdoor flow.*

Vibrant in style and imposing in nature the newly refurbished J.R. Fleming Grandstand is one of our most pliable spaces, adaptable to any vision to create experiences like nowhere else. Positioned alongside the trackside lawn, it is perfectly suited to outdoor functions requiring adjoining indoor space such as conferences and exhibitions. It can be used in its entirety or broken up into smaller areas for more intimate functions. All levels are connected via internal elevators and escalators for an effortless flow of guests between multiple levels. The perfect takeover space for large events.



## VENUE FEATURES

- Three levels of versatile event spaces
- Natural light and carpeted floor
- Seamlessly adjoins trackside lawn space with racecourse views
- Adjacent to Exhibition Hall for added space
- Free high density WiFi
- Multi-panel LED screen
- Wall mounted LCD screens
- Public address sound system
- Roller door access
- Standard and three phase power
- Phone and data services
- Existing bars and café outlets
- Amenities
- Air conditioned
- Free onsite parking
- Onsite security

## SUITABLE FOR

Conferences, seminars, special events, cocktail parties, product and car launches, corporate family days, exams, trade exhibitions and consumer shows.

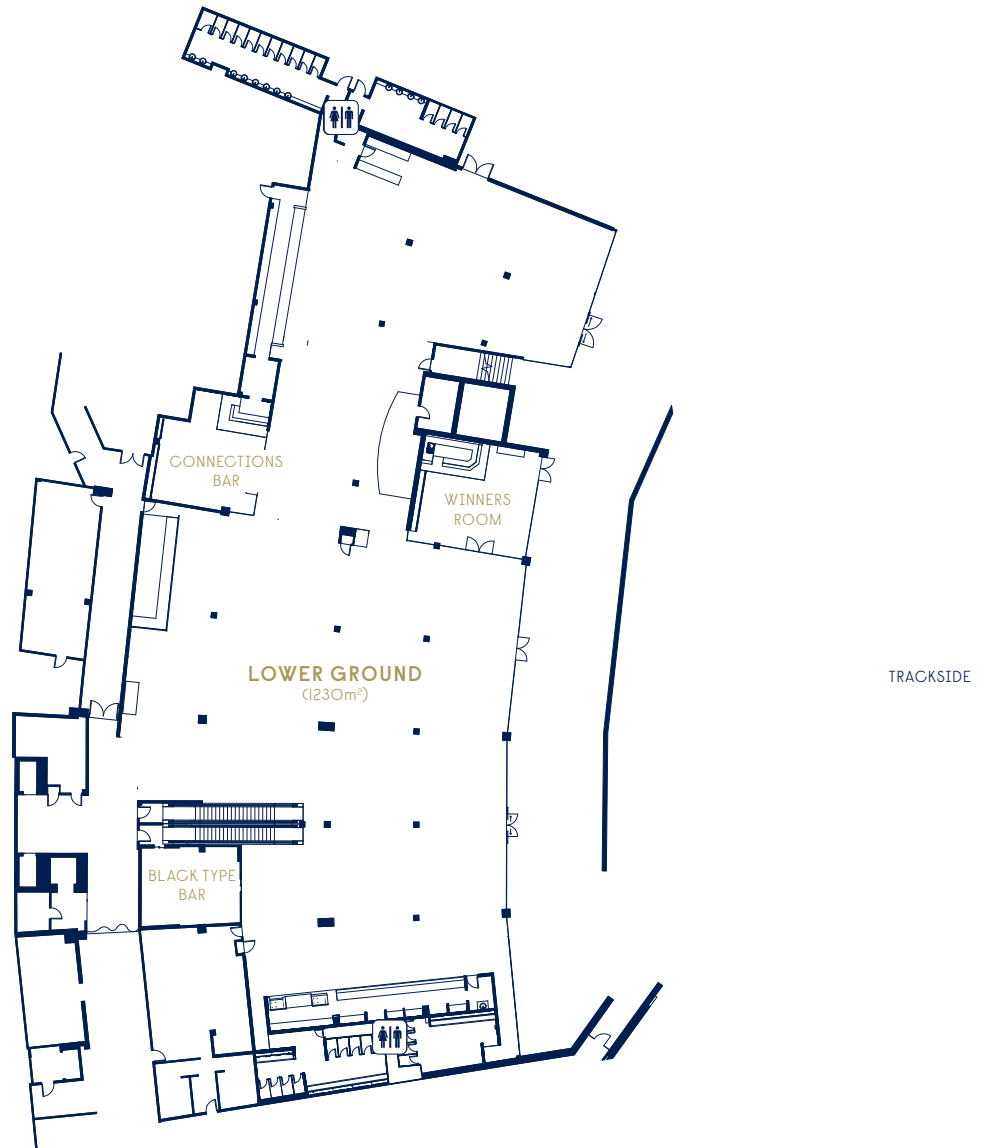
- Lower Ground:** 1230m<sup>2</sup>
- Ground:** 4189m<sup>2</sup>
- Level 1:** 1702m<sup>2</sup>
- Level 2:** 1490m<sup>2</sup>
- Level 3:** 609m<sup>2</sup>

To find out more please contact our Meetings & Events Team  
P | 1300 729 668  
E | [meetingsandevents@australianurfclub.com.au](mailto:meetingsandevents@australianurfclub.com.au)



## ROSEHILL GARDENS

### LOWER GROUND FLOOR J.R. FLEMING STAND



### VENUE CAPACITY

400 THEATRE

600 COCKTAIL

300 EXAMS

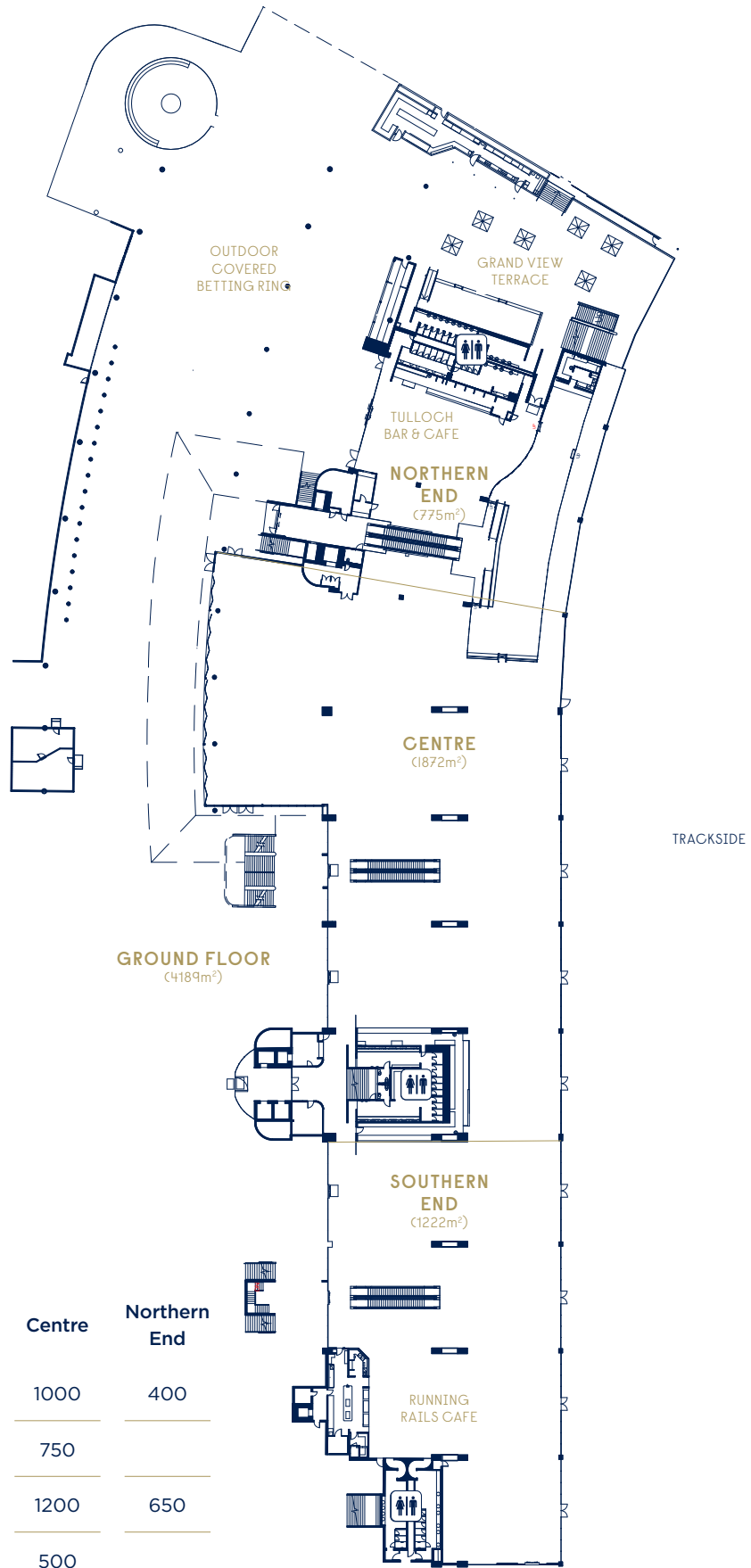
50 EXHIBITION BOOTHS

0m 3m 5m 10m



ROSEHILL GARDENS

GROUND FLOOR  
J.R. FLEMING STAND



VENUE CAPACITY

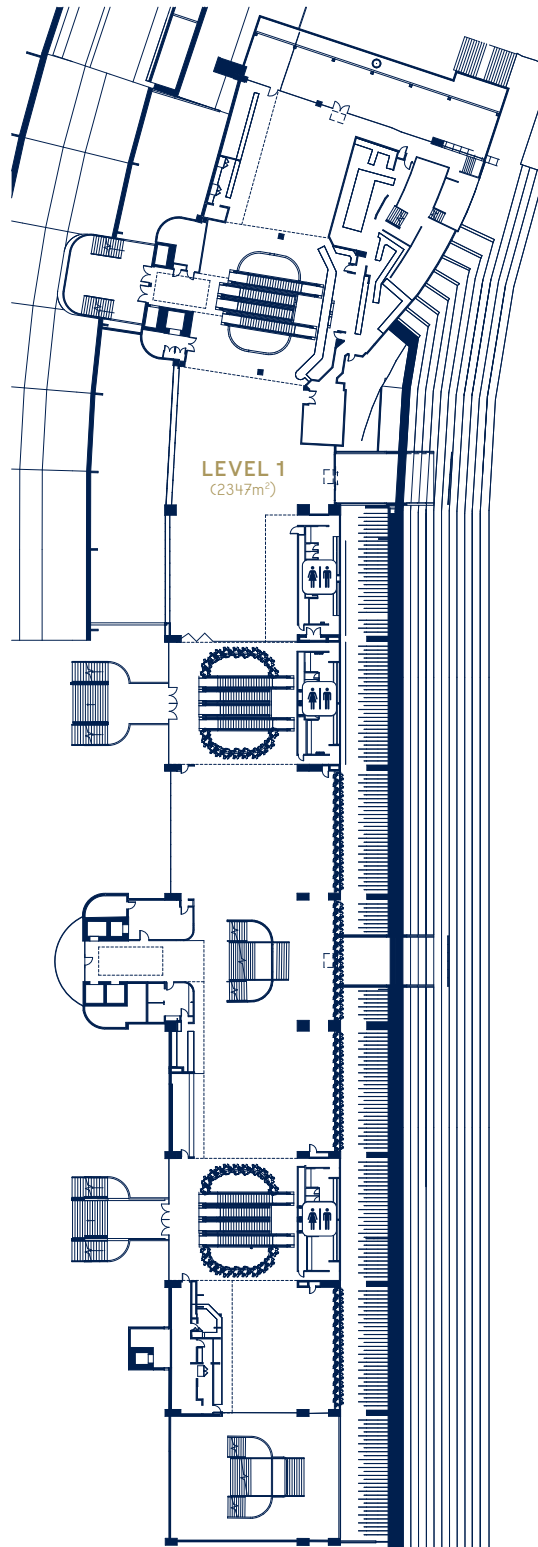
Room	Ground Floor	Southern End	Centre	Northern End
THEATRE		800	1000	400
CLASSROOM		400	750	
COCKTAIL	2000	1000	1200	650
BANQUET		500	500	
EXAMS		250	250	150
EXHIBITION BOOTHS	123	120	100	60

0m 6m 10m 20m



## ROSEHILL GARDENS

### LEVEL 1 J.R. FLEMING STAND



TRACKSIDE

### VENUE CAPACITY

200 THEATRE

300 CLASSROOM

400 COCKTAIL

250 EXAMS

120 EXHIBITION BOOTHS

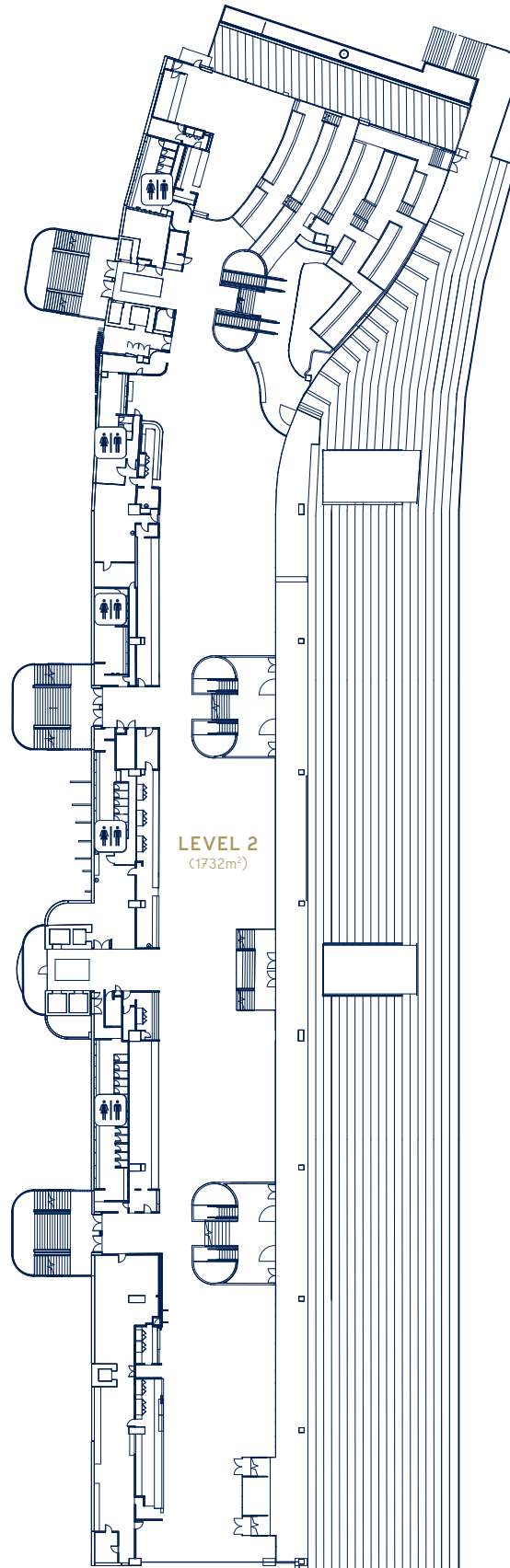
0m 6m 10m 20m





## ROSEHILL GARDENS

### LEVEL 2 J.R. FLEMING STAND



### VENUE CAPACITY

250 THEATRE

200 CLASSROOM

350 COCKTAIL

330 BANQUET

150 EXAMS

23 EXHIBITION BOOTHS

TRACKSIDE

0m 6m 10m 20m

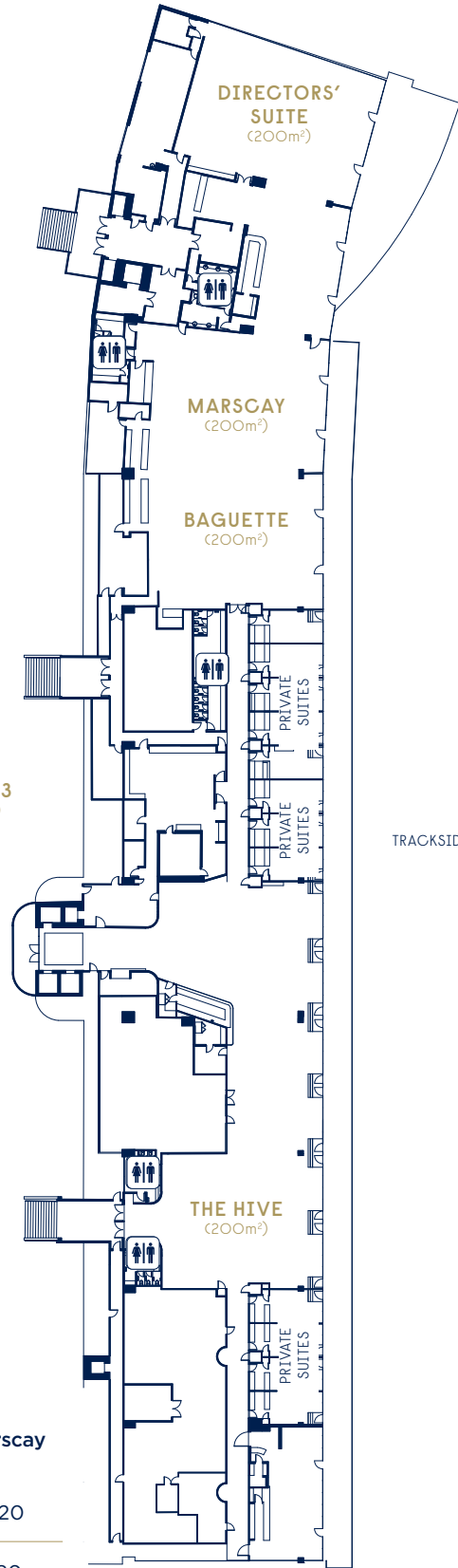




ROSEHILL GARDENS

LEVEL 3  
J.R. FLEMING STAND

LEVEL 3  
(609m<sup>2</sup>)



VENUE CAPACITY

Room	The Hive	Directors' Suite	Baguette	Marscay
THEATRE	120	180	220	220
CLASSROOM	80	150	180	180
COCKTAIL	250	250	280	280
BANQUET	240*	180	150	150
CABARET	200#	95	90	90
EXAMS	80			
EXHIBITION BOOTHS	12			

\* with stage.  
# tables of eight only.

